



Lucent Technologies
Bell Labs Innovations

PMVision

Graphical Management Utility for PortMaster Products

Flexibility and ease of use are key factors in the selection of remote access hardware and software today. Network managers look for simple, portable, extensible interfaces that allow them to manage multiple units simultaneously.

Lucent Technologies PMVision™, a Java™-based GUI configuration and management utility, provides a consistent interface for all Lucent Technologies PortMaster® access servers and routers running ComOS® version 3.8 or greater. Because PMVision is Java-based, it runs on a variety of workstations, offering a

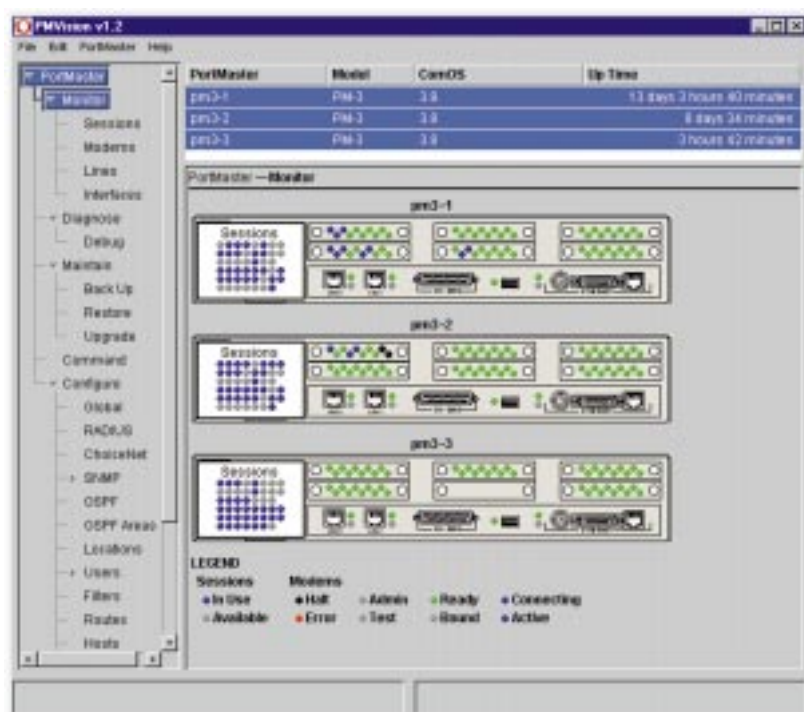
new level of flexibility for remote access administrators.

With Lucent PMVision, administrators use pull down menus and on-screen forms with predefined fields to create dial-in user accounts, outbound locations, and packet filters. Features such as multiple simultaneous device management and configuration backup save time while further simplify remote access deployment. PMVision also provides graphical access to features that, until now, have only been accessible through a command line interface.

Configure

Lucent PMVision provides detailed system-level configuration management as well as support for cut, copy and paste commands. You can configure multiple PortMasters side-by-side. Simply use copy-and-paste buttons to duplicate user, location, filter, port, line, and ethernet configurations from PortMaster to PortMaster.

If you're more comfortable with performing certain tasks manually, you can use PMVision's fully functional command line interface. The Command Line Interface (CLI) option in PMVision supports the same configuration commands available in the traditional PortMaster CLI, and the same defaults apply whether you use the command line or GUI interface. Of course, all output can be logged, one file per PortMaster.



Backing up configurations is equally straightforward. You can save the entire configuration of a device to a file, or select just one or more subsystems. All backups are written as ComOS CLI text, so you can read or edit the file using a simple text reader. Command files can also be restored to a PortMaster, and the complete restoration, including ComOS responses, can be logged to a file.

Monitor and Manage

PMVision lets you view graphical representations of the back panels of multiple PortMaster devices in

real-time, including the True Digital™ modems, Ethernet, PRI/BRI and T1/E1, and connection status. To monitor activity in greater detail, simply select a portion of a back-panel image or use the control tree. And, with a single action, you can send simultaneous commands to any combination of connected devices.

Diagnose

PMVision brings equal flexibility and ease-of-use to diagnosis and debug operations. You can monitor diagnostic and debugging messages in real time, with flexible, extended filtering. All output can be logged to a file

or files. You can perform the same debugging process on all connected PortMaster devices, or turn off and change debugging requests on individual devices.

Lucent PortMaster products are known throughout the industry for their ease-of-use. Now, with PMVision, configuring and managing your PortMaster devices is even easier.

General Specifications

Minimum System Requirements

PC (133MHz CPU or faster), 32 MB RAM, UNIX® or Microsoft® Windows 95 or NT®, Java JDK or JRE version 1.1.4 or later, Lucent Technologies ComOS Version 3.8 software

PMVision Details

Configure

T1/E1/PRI lines, True Digital modems, ports (asynchronous, synchronous, ISDN, parallel), users (network, login, dialback, net work dialback), locations, packet filters, Ethernet, OSPF, OSPF area, syslog, host table, routes (RIP Read all, edit Static), SNMP, MCPPP, RADIUS, ChoiceNet™

Monitor

Modems, sessions, lines, interfaces

Maintenance

Upgrade, reboot, save/restore flat file configuration, command window, listen to any valid set of debug messages, with filtering

For additional information about PMVision, please contact your Authorized Lucent Technologies Sales Representative.

Visit our Web site at <http://www.lucent.com/dns>

Copyright © 1998 Lucent Technologies. All rights reserved. Printed in U.S.A.

PortMaster, ComOS, and ChoiceNet are registered trademarks of Lucent Technologies, Inc. RADIUS ABM, PMVision, PMconsole, True Digital and IRX are trademarks of Lucent Technologies, Inc. Java™ is a trademark of Sun Microsystems, Inc. UNIX® is a registered trademark of X/Open Co. Ltd. Microsoft®, Windows & Windows NT are registered trademarks of Microsoft Corporation.

This document is for planning purposes only and is not intended to modify or supplement any specifications or warranties relating to these products and services.

Lucent Technologies
Marketing Communications
DAT0655 ND 8/98

